



Features

- Automated Barcode Solution
- Patron-friendly workflow
- High strength design
- Capable of high transaction volumes
- Service-friendly internal layout
- Proven components for reliability
- Options:
 - Prox reader
 - Credit card insertion reader
 - Bank note accepting
 - Bank note dispensing, up to 4 denominations
 - Coin accepting
 - Coin dispensing, up to 3 denominations



Standard Colors:
Silver, White, Yellow

Experience pays off

The Universal BPS combines Federal APD's half century of application experience with the best in design and components to create a patron-friendly, service-friendly barcode payment kiosk for today's parking applications.

Designed around the patron...

Designed for high volume payment applications, the Universal BPS recognizes POD500 barcode tickets, calculates the patron's fee (including any barcode vouchers or validations), then accepts credit card, coin or bank notes or coins as appropriate, and can elect to receive a receipt from the thermal printer.

The 15" display directs the patron throughout the transaction. A carefully designed series of screens and component locations allow optimal user-friendliness for all patrons regardless of age, native language or literacy. And the kiosk size and layout provides comfortable ergonomics for patrons.

Universal BPS Barcode Pay Station

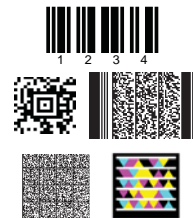
The Bottom Line

But even successful patron interactions and easy maintenance can't overcome the cost of theft or substantial vandalism. So the Universal BPS is designed to resist theft and vandalism to a high degree by using heavy gauge steel construction, a five point locking mechanism and a reinforced LCD display.

Simple Validation & Discounts

The Universal BPS reads nearly all barcodes in existence today through it's omni-directional barcode imaging device, from traditional linear barcodes to QR codes, RSS codes and stacked linear barcodes. The imaging unit can read barcodes on printed media or from mobile devices.

Multiple Barcodes



Omni-directional



Universal BPS - Barcode Pay Station

Specifications

Intelligence

- Configurable remotely over network from Element™ or locally.
- Configuration options:
 - Patron display messages
 - Currency handling
 - Reports
 - Receipts
- Networkable via (optional configurations):
 - RS-485 serial loop

Patron Interaction

- 15" LCD display directs patron through transaction workflow
- Change Language button supports English, Spanish, Portuguese and French
- Accepts (optional configurations):
 - Barcode tickets, validations via image reader
 - ValuePass Recharge via prox card
 - Credit cards via insertion reader
- All coin denominations between 15mm and 32mm
- Up to 14 bank notes denominations
 - 120mm to 165mm length, 62mm to 82mm width

- Stores (optional configuration):
 - Approximately 2000 small coins (18mm), 1200 large coins (24mm)
 - Approximately 1000 bank notes
 - Recycles coin denominations used for dispensing
- Dispenses (optional configurations):
 - Up to 3 denominations of coins between 17mm and 31mm
 - Approximately 1200 large coins per denomination (24mm)
 - Up to 4 denominations of bank notes
 - 120mm to 165mm length, 60mm to 82mm width, 0.09mm to 0.3mm thickness
 - Approximately 500 bank notes per denomination
- Thermal printer provides patron receipt upon request or automatically printed.

Electrical

- 90-130VAC or 180-240VAC external power
 - Maximum draw – fully configured – 90-130VAC: 15A
 - Maximum draw – fully configured – 180-240VAC: 8A
- 24VDC internal circuit for low voltage components
- Three (3) 90-130VAC outlets for service (when fully configured)
- Segregated AC circuit for optional UPS unit

Mechanical

- 66" H x 27" W x 22" D (168cm H x 69cm W x 56cm D)
- Weight – fully configured: 540lbs (245kg)
- Heavy gauge steel construction
- E-coated frame for rust prevention
- Powder-coated cladding

Security

- Heavy gauge steel construction
- Five point locking system
- User-configurable keys for external lock
- Cabinet access is monitored and recorded
- Additional internal locking for all cash-handling components
- Reinforced LCD display

Environmental

- External operating temperature: -10° to 40° C (14° to 104° F)
- Insulated, heated to maintain internal temperature and humidity ranges
- ANSI/UL STD 751 cabinet
- Suitable for Outdoor Use

Barcode Imager

- Scan Rate: 56 images per second in 2D mode, 200 images per second in Linear emulation mode



Use your mobile app to learn more about Federal APD solutions.

www.federalapd.com
800.521.9330

Distributed by:

© 2012 Federal Signal Corporation Printed in USA APD #200
Subject to design and/or appearance modifications that are production standards at the time of shipment.