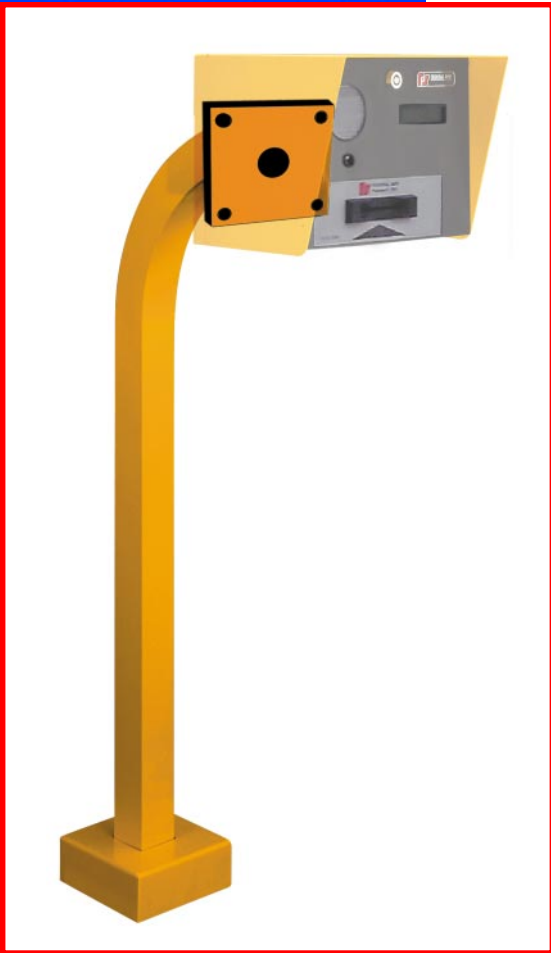
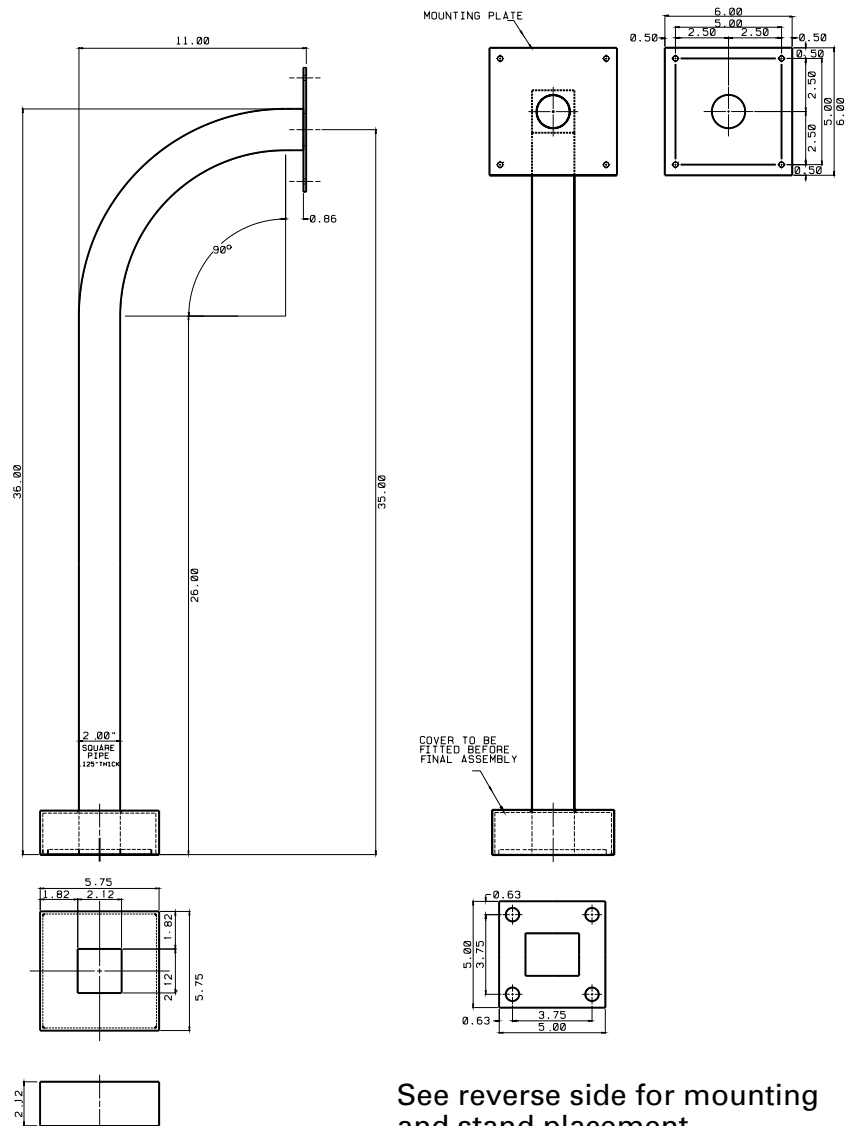


# Gooseneck Stand for Card Readers



## Standard Gooseneck Stand



### Features:

- Standard or extended gooseneck stands available.
- Constructed from heavy-gauge aluminum.
- Finished with a powder coat paint in either Federal APD Safety Yellow or Federal APD White (as specified). Other optional colors available as specified.
- Durable 2-inch (51 mm) square tubing.
- Fitted cover over base mounting flange provides finished appearance.
- Square mounting plate with tapped holes.
- 90° curvature provides easy motorist access.
- Simple wire pulls with centered conduit holes.



Use with card readers, intercoms, etc

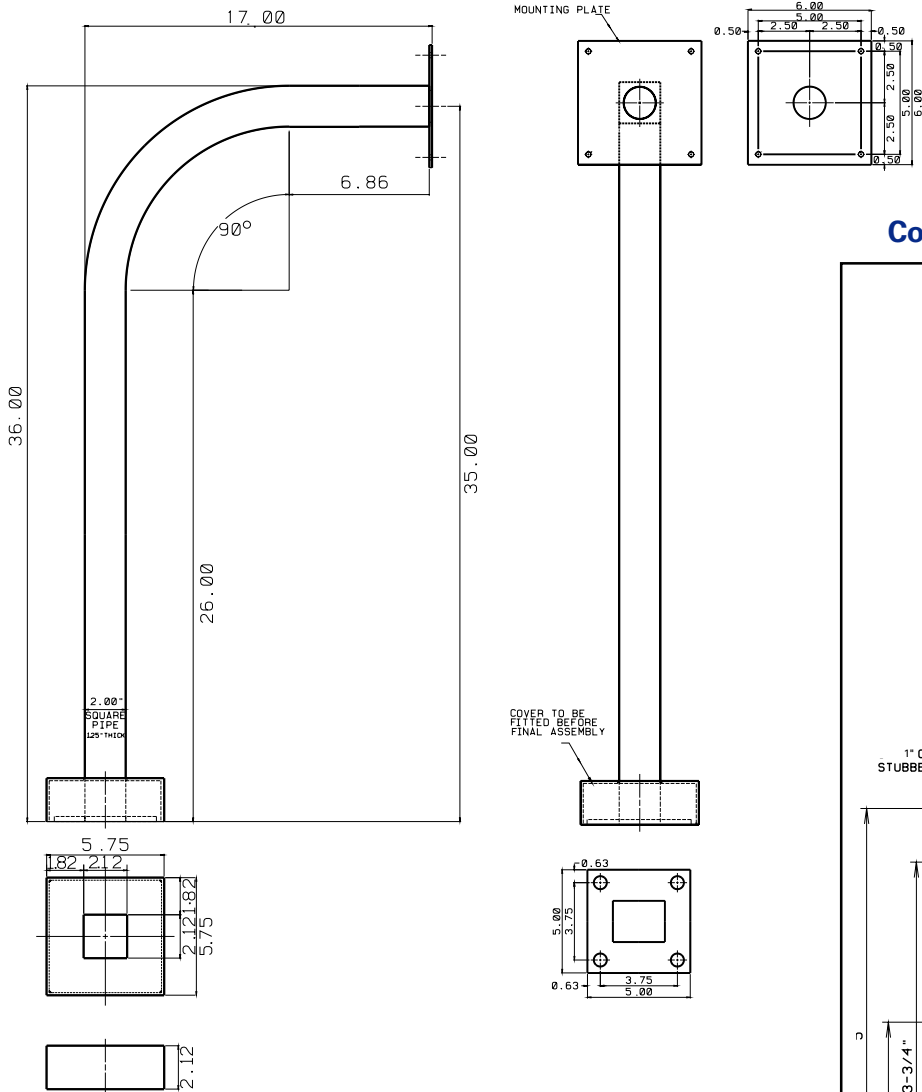
See reverse side for mounting and stand placement



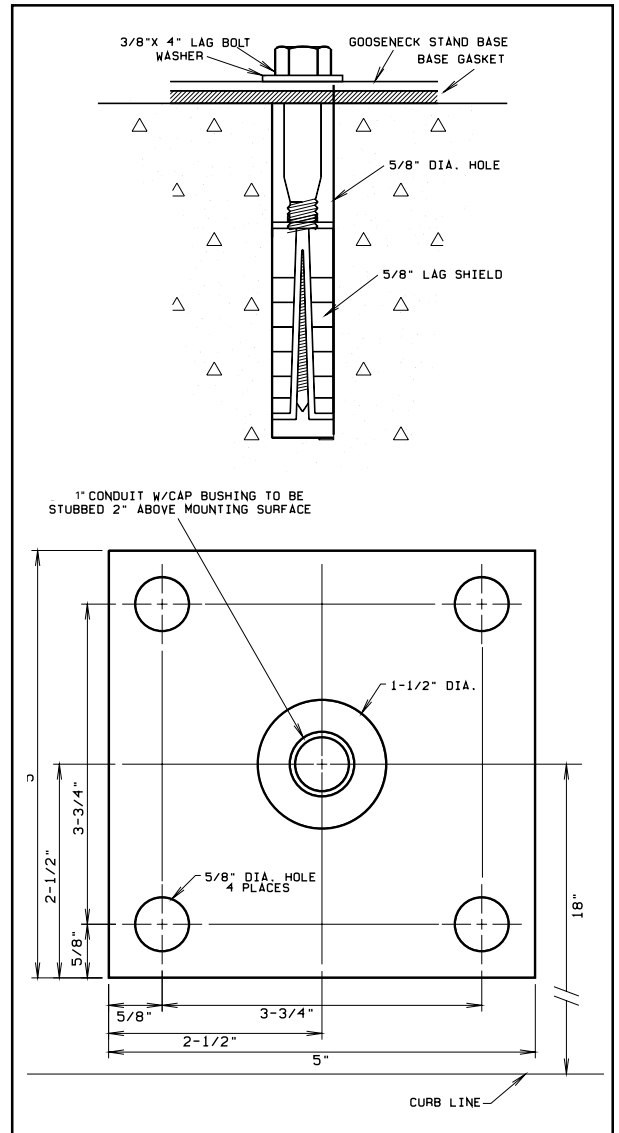
**FEDERAL APD**  
Federal Signal Corporation

# Gooseneck Stand For Card Readers

## Extended Gooseneck Stand



## Conduit/Gooseneck Stand Placement



42775 Nine Mile Road • Novi, Michigan 48375 • U.S.A.  
Tel: (248) 374-9600 • Fax: (248) 374-9610  
Sales: (800) 521-9330 • Canada: (800) 331-9144  
<http://www.FederalAPD.com>

Distributed by: